

Your Gift Guide for
GREENLEAF PHARMACIES
MOTHER'S DAY 2025



Our Mothers

Last month, 50 members of the Greenleaf team took part in a heartwarming photo shoot at Hood Studio alongside their mums. The day was filled with love, laughter, and connection. We're so excited to share some of these beautiful moments with you—and to celebrate the incredible mothers who are such an important part of the Greenleaf family.





Kip & Co

Kip & Co is a homeware brand focused on sustainability and ethical practices, founded by three women. Their products enhance home decor and dinner parties with innovative prints, vibrant colors, and unique products. The brand celebrates timeless pieces while boldly experimenting with design, avoiding trends for a refreshingly original approach.

- GARDEN TOOLS & GLOVES SET \$64.99
- STRAWBERRY POTS - \$84.99
- COOLER BAGS - \$79.99
- GLASSES SET - \$64.99
- JEWELLERY BOX - \$74.99
- FLOWER GLASSES - \$74.99



Gretel & Marty

Retail Manager at Greenleaf Pharmacy Herdsman

Gretel has been our Retail Manager at Herdsman for the past 6 years. She's known for her dedication, kindness, and the genuine care she brings to both her team and customers every day. Pictured here with her lovely mum, Marty, Gretel shares, "I love my mum for her endless support and the way she always believes in me. She's been my biggest cheerleader."



Country Couture

Glasshouse Fragrances

Visiting your mother or mother figure evokes a sense of home. This Mother's Day, imagine a nostalgic countryside journey through an ornate gate, surrounded by nectarine and pink peppercorn trees, leading to a cozy cottage filled with comforting sandalwood and tonka aromas.

CANDLE - \$59.99

DIFFUSER - \$59.99

HAND CREAM SET - \$36.99

DUO SET - \$84.99

GIFT SET - \$109.99



Abbey & Phillipa

Greenleaf Wanneroo & Pearsall

Phillipa and her daughter Abbey have been part of the Greenleaf family for many years, working across our pharmacies and bringing their warm, welcoming presence to the community. Their family has been involved with our business for decades—a true part of the Greenleaf story and the community we serve. Their close bond shines through in everything they do, whether supporting each other at work or sharing a passion for helping those around them.



Rachel

Owner of Greenleaf Belridge

Rachel is a dedicated young mum of two who balances family life with running her own business as a Pharmacist at Greenleaf Pharmacy Belridge. Her passion for helping others and her unwavering commitment to both her patients and her children truly inspire everyone around her.

Circa Fragrances

Limited Edition Honeysuckle & Frangipani



Enjoy an afternoon stroll in a tropical garden filled with fragrant blooms, featuring frangipani, sweet honeysuckle, climbing rose, soft musk, and a hint of red currant for a delightful experience.



CANDLE - \$44.99
 DIFFUSER - \$52.99
 HAND CREAM - \$34.99
 SACHETS - \$15.99



Jamie & Sophia

Greenleaf Owner

Jamie and his mum, Sophia, share a special bond built on family connection, encouragement, and unwavering support. Jamie greatly appreciates everything his mum has done for him—not just in his personal life, but also as a constant pillar of strength throughout his journey of growing and building his businesses.



Avni

Managing Pharmacist at Subiaco

Avni, a proud mother of her two beautiful boys, has embraced the joy of returning to work while balancing motherhood. She's loved stepping back into her role and thriving as the manager of Greenleaf Subiaco, where she brings warmth, care, confidence & professionalism to her team every day.

Ecoya

Limited Edition Citrus Blossom & Magnolia Ceramic



This collection includes limited edition ceramic vessels and the new Citrus Blossom & Magnolia fragrance, celebrating sophistication and beauty.

CANDLE \$54.99
DIFFUSER \$54.99
HAND CREAM \$ 24.99
GIFT SET \$74.99



Marg

Greenleaf West Perth

Marg is the beloved better half of Chris, owner of Greenleaf West Perth, and a vital part of the store's charm. With a keen eye for beautiful gifts and a natural flair for customer service, Marg brings warmth, style, and a personal touch that makes every visit to the store feel special.



Michelle

Greenleaf Head Office

Michelle, our incredible Special Projects Manager at Greenleaf, is not only a powerhouse at work but also a proud and devoted mum. Her unwavering support, strength, and the heart she pours into everything she does always makes a meaningful difference to both her family and the Greenleaf team.



Self-Warming Patch

Lula Body Patches provide up to 10 hours of soothing warmth for period discomfort, muscle soreness, and everyday aches. These slim, discreet patches warm quickly and adhere to clothing, allowing for hands-free relief during various activities.

PACK OF 5 PATCHES - \$21.99



Self-Warming Eye Mask

This self-warming eye mask from Lula provides a comforting experience as it warms upon opening, releasing one of four fragrances. Ideal for relaxation and sleep, it features a subtle jasmine scent that aids in de-stressing. Perfect as a gift for selfcare.

PACK OF 5 PATCHES - \$34.99

FRAGRANCES :
ROSE | JASMINE | LAVANDER |
VANILLA | UNSCENTED



Emma

Gift Warehouse Subiaco

Emma is an amazing young mum with an unwavering love for her kids and one of the hardest workers you'll ever meet. As our key distributor in the Gift Warehouse, she's the backbone of our operations, always giving 110% to keep everything running seamlessly. We're beyond grateful to have her on the team!

Wild Emery

Australian Handmade Bath, Body and Gifts



Wild Emery, a handcrafted Australian product, is PETA-approved, vegan, & cruelty-free. These steamers will enhance Mum's shower routine, providing her invigoration & relaxation.

SINGLE SHOWER STEAMER - \$9.99
SHOWER STEAMER 6 PACK - \$41.99
LIP BALM - \$11.99
HANDMADE SOAP - \$11.99



Kishani

Wanneroo & Pearsall

Kishani, a proud mum to two beautiful girls, has been a valued part of the Greenleaf family for nearly 10 years. Now working part-time, she's embraced the wonderful chaos of motherhood while continuing to bring her dedication and positivity to our Greenleaf team.



Every great cocktail starts with the right tools and serving wear. Here's How is a curated a collection of beautifully designed barware perfect for every home. Enhance the social experience and cultivate joy and connection in the process.

PLASTIC MARGARITA GLASSES
\$44.99
PLASTIC JUG - \$44.99
BAR TOOL SET - \$69.99



Bronwyn

Team Greenleaf

Bronwyn is the heartbeat of the family behind Greenleaf – Mum to our wonderful Gabby, Campbell and Elliot, and wife to Kyle. An integral part of Greenleaf's success, Bronwyn is a constant source of support and a trusted sounding board – not just in life, but in work too. Whether it's offering considered advice, helping navigate tough decisions, or simply being there to listen, Bron's insight and care has helped shaped so much of what makes Greenleaf great.



Zafino

Zafino collaborates with global artisans, honouring its ethnic roots from Jaipur, India. The company partners with a factory employing 70% women, promoting female empowerment. Committed to sustainability and fair trade, a significant part of their collection is waterproof or water-resistant, made from nickel-free hypoallergenic brass.

EARRINGS START FROM - \$29.95
HAIR CUFFS - \$39.95
NECKLACES - \$29.95



ZODA

Founded by two fashion-loving sisters. With 40 years of experience in the jewellery and accessories industry, they provide bold, on-trend designs. Their Australian-designed products feature high-quality jewellery, ranging from casual to elegant styles.

EARRINGS FROM - \$54.99
BRACELETS FROM - \$39.99
KEYCHAIN \$39.99



Amanda

Head Retail Manager

Amanda is a dedicated mum and our incredible Head Retail Manager. She's a constant source of guidance and support for everyone around her. Her passion for helping others shines through in the way she trains, nurtures, and uplifts our team — leading with care, experience, and a genuine commitment to helping people become the best version of themselves.

Stray Willow

100% Natural Essential Oil Perfumes, Bath & Body



Explore a curated set of four miniature perfumes made with 100% natural essential oils for self-expression. These calming fragrances enhance mindfulness and elevate mood, including:

- Wild Fields: Jasmine, Bergamot & Neroli
- Sweet Muse: Grapefruit, Ylang Ylang & Vanilla
- Woodlands: Sandalwood & Patchouli
- Idle Falls: Neroli, Ylang Ylang & Blue Tansy

DISCOVERY PACK - \$34.99

INCENSE PACK - \$39.99

ROLL ON PERFUME - \$34.99



Majestic Coast

La La Land

Explore the enchanting Majestic Coast collection, featuring antique and mythological ocean-inspired motifs like crabs, mermaids, and sailors. This classical approach adds a fresh twist to nautical aesthetics, combining timeless elegance with whimsical charm.

HEART SHAPE TRINKET TRAY

MAJESTIC COAST - \$22.99

GLASS TUMBLER LARGE MAJESTIC COAST (SET OF 2 GLASSES) - \$49.99

SQUARE TRINKET TRAY MAJESTIC COAST - \$21.99



Backcountry

La La Land

Explore the Backcountry collection, celebrating Australia's small towns and Outback communities. Discover the cowboy culture inspired by cattle drivers and the tranquil lifestyle off the beaten path.

PAPACRAFT BY NUMBER SMALL KIT

BACKCOUNTRY - \$19.99

LOUNGE MUG BACKCOUNTRY - \$34.99

VASE BACKCOUNTRY - \$49.99



Cara

Greenleaf North Beach

Cara is a proud mum to Charlie and James and wife to Stuart, the owner of Greenleaf North Beach. She's been an unwavering support to Stuart, playing a key role in the growth and success of the North Beach business. Her dedication and behind-the-scenes contributions have been invaluable in helping North Beach thrive.



Garden Collection

CERAMIC CUP OF LOVE MUG & SPOON SET - \$34.99
 SHOWER STEAMER GIFT BOX - GARDEN LOVE 4PC \$ - 24.99
 FUZZY BED SOCKS - \$12.99



Spa Mum

FLOWER HEATABLE PILLOW - \$29.99
 BEAUTY RITUAL - LUXURY WAFFLE HAIR TURBAN - \$12.99
 SPA TRENDS - DRY BODY BRUSH



Velvet Collection

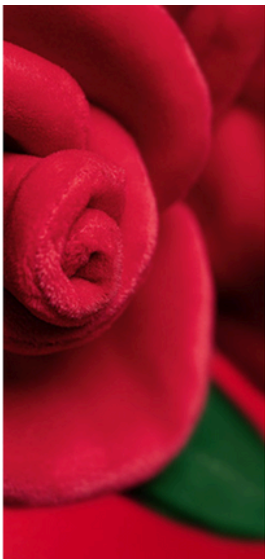
VELVET HEAT PILLOW - COSY LUXE - \$29.99
 VELVET GLASSES CASE - DOUBLE - \$12.99
 VELVET EYE REST PILLOW - COSY LUXE - \$25.99



Sandy

Greenleaf Gifts

Sandy is the founder of our beloved Gift Department at Greenleaf. A proud mum to James and Charles and grandmother to Alice, she's the first to offer help and always goes above and beyond for those around her. Sandy is a constant source of inspiration, wisdom, and guidance, always uplifting others with her generous spirit and wealth of knowledge.



Jellycat Love

Our massively popular Jellycat range is the perfect way to bring a smile to Mum's face this Mother's Day. With their irresistibly soft textures, charming designs, and playful personalities, Jellycats are more than just toys—they're keepsakes filled with comfort and joy. Whether she loves a classic bunny or something a little quirky, there's a Jellycat to suit every mum's unique style. It's a thoughtful, heartwarming gift that says "I love you" with a cuddle.

Fall in Love with Our Jellycat Collection at Greenleaf

Discover the huge Jellycat range at Greenleaf Pharmacies—packed with limited editions, quirky characters, and timeless favourites for all ages. Get first access to exclusive releases and find the perfect Jellycat to gift or collect. Whether you're treating Mum, a loved one, or yourself, there's a cuddly companion waiting to be loved.



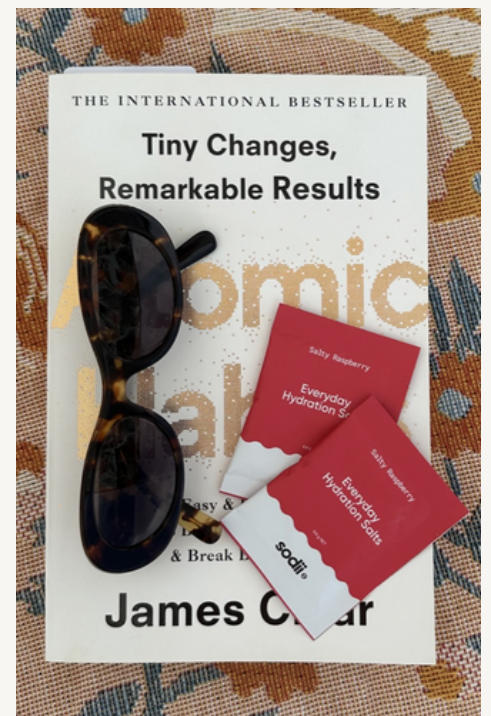


Karishma

Owner of Greenleaf Belridge

Karishma, owner of Greenleaf Belridge, is a dynamic entrepreneur and proud mum to two beautiful young boys. Passionate about creating meaningful connections within her community, she brings drive & passion to everything she does. As a strong advocate for women's rights, Karishma leads with heart, purpose, and a vision for educating & empowering others.

Sodii Everyday Hydration Salts



Whether you're taking part in a marathon, or cycling the coast on holiday, you'll improve your hydration, performance, and stamina when you use electrolytes. Electrolytes are a combination of necessary salts that your body needs to balance fluid, reduce muscle tension, prevent cramps and side-swerve those headaches that crop up at the most inopportune moments.



SAMPLE PACK - \$16.99
SACHETS 30PK - \$68.99
TUB - \$63.99

WOMEN'S HEALTH



Biome Her Probiotic

Biome Her Probiotic is specially formulated to support women's health, with strains that promote vaginal and urinary tract balance, digestive comfort, and immune strength. It also supports mood and hormone balance through the gut-brain connection, making it a great choice for busy mums navigating stress, hormonal shifts, or postpartum recovery. For breastfeeding mothers, it can even help pass on beneficial bacteria to support baby's developing gut and immune health.

Biome Her Probiotic - \$52.99



True Hot Chocolate

True Protein Hot Chocolate Collagen Drink supports skin, joint, and bone health with collagen, while also providing a protein boost for energy and muscle recovery. It's a delicious way for mums to nourish their bodies, promote hydration, and maintain skin elasticity

True Protein Hot Chocolate - \$29.99



Anti-Ageing Serum BoostLab

Boost Lab Multi-Peptide Anti-Ageing Serum is an excellent gift for mums seeking effective and affordable skincare:

- Helps control signs of ageing
- Reduces the appearance of crow's feet & fine lines
- Provides deep & long-term hydration

Boost Lab \$29.99



Herbs of Gold Women's Multi +

Herbs of Gold Women's Multi + is a multivitamin tailored for mothers, featuring 25 essential vitamins, minerals, and herbs. It boosts energy, supports immune function, provides antioxidant protection, and promotes cognitive health with active forms of folate and B12, helping mothers maintain vitality throughout their busy days.

Herbs of Gold Womens Multi + \$55.99



Hayley

Owner of Greenleaf Shenton Park

Hayley is the heart and soul of Greenleaf Shenton Park and a devoted mum to three energetic boys. Always on the go, she juggles the chaos of motherhood with the demands of running a thriving pharmacy, all with a smile on her face. Her passion for community, family, and wellness shines through in everything she does. It's no surprise customers are always asking for Hayley - her warmth, care, and genuine nature make everyone feel right at home.

Salt Lab Magnesium Oil and Spray



- Promotes deep relaxation and calms the nervous system
- Helps little ones to fall asleep and stay asleep
- Boosts energy and concentration levels
- Reduces cramps and relaxes muscles
- Superior, fast absorption and non-sticky
- 100% natural, vegan and non-toxic

Salt Lab Magnesium Oil Spray is a natural, non-toxic solution for mothers to enhance sleep, relieve muscle tension, and reduce stress. It promotes relaxation and recovery, making it an essential self-care product for busy lifestyles.

SALT LAB - \$39.99

SALT LAB KIDS - \$39.99



Feel Good Inc. Sunscreen

Feel Good Inc sunscreen makes the perfect Mother's Day gift –it's nourishing, non-greasy, and packed with skin-loving ingredients that protect and hydrate. Whether she's out for a walk, at the beach, or chasing little ones around the park, it keeps her skin safe and glowing all day long.

Traveller 75ml - \$19.99

Bottle 200ml - \$32.99

Pump 400ml - \$49.99



Heylo Magnesium Water

Heylo Magnesium Sparkling Water is a great choice for women, offering daily support for hydration, hormonal balance, and stress relief. Magnesium plays a key role in easing muscle tension, supporting mood stability, and reducing symptoms like PMS or fatigue—making it an easy, refreshing way for Mums to care for their bodies and minds.

Heylo Magnesium Sparkling Water - \$5.99 or 2 for \$10



Fend Insect Repellent

Fend Insect Repellent is favoured by mothers of young children for its natural, safe, and effective protection against insect bites without harsh chemicals. Made from plant-based ingredients, it offers 14 hour long-lasting defense while being gentle on sensitive skin, making it ideal for outdoor activities and providing peace of mind for parents.

Fend Deet Free Repellent - \$36.99



Herbs of Gold Sleep Ease

Herbs of Gold Sleep Ease is a natural remedy designed for mothers seeking better sleep and stress relief. Featuring ingredients like Passionflower and Ziziphus, it calms the mind, reduces restlessness, and enhances sleep quality. This gentle, plant-based formula serves as a safe alternative to synthetic sleep aids, promoting relaxation and overall well-being for parents.

Herbs of Gold Sleep Ease - \$37.99



Empire Australia Classic White Florals



An elegant collection of pampering bath and body care with a classic floral/citrus blend of jasmine, citrus blossoms and geranium essential oils. All Empire Australia products are proudly designed and produced in Melbourne, Australia and never tested on animals.

HAND CREAM - \$12.99
GIFT PACK - \$34.99
BATH SALTS - \$24.99
HAND & BODY WASH - \$16.99
BODY SCRUB - \$24.99



Thank you!

Thank you to all the incredible mothers in our Greenleaf family and local community for the love, strength, and warmth you bring every day. We're so grateful to celebrate you and share in this special day together. Wishing you a Mother's Day filled with joy, relaxation, and the appreciation you truly deserve. 🌸

Plus don't forget.....



Scan here to book

**BOOK YOUR
FREE
FLU SHOT
THIS MAY**

At Greenleaf Pharmacies

STORE LOCATIONS

GREENLEAF PHARMACY WANNEROO

9 CONLAN AVENUE
WANNEROO
P: 9306 8868
WEEKDAYS: 7AM-10PM
WEEKENDS: 8AM - 9PM

GREENLEAF PHARMACY HERDSMAN

3/1 FLYNN STREET
CHURCHLANDS
P: 9387 6665
OPENING HRS: 8AM-9PM

GREENLEAF PHARMACY NORTH BEACH

1 NORTH BEACH ROAD
NORTH BEACH
P: 9447 1419
OPENING HRS: 7AM-8PM

GREENLEAF PHARMACY SHENTON PARK

159 ONSLOW ROAD
SHENTON PARK
P: 9381 8029
OPENING HRS: 7AM-9PM

GREENLEAF PHARMACY PEARSALL

1/155 WILLESPIE DRIVE
PEARSALL
P: 9206 5588
OPENING HRS: 8AM-9PM

GREENLEAF PHARMACY ALKIMOS

11/1 GRACEFUL BLVD
ALKIMOS
P: 9502 9889
OPEN EVERYDAY: 8AM-8PM

GREENLEAF PHARMACY WEST PERTH

1260 HAY STREET
WEST PERTH
P: (08) 6118 4540
WEEKDAYS: 7AM-6PM
SATURDAY: 9AM-1PM
SUNDAY: CLOSED

GREENLEAF PHARMACY BELRIDGE

SHOP 10, OCEAN REEF RD
BELRIDGE
P: (08) 6555 1833
WEEKDAYS: 8AM-8PM
SATURDAY: 8AM-8PM
SUNDAY: 11AM - 5PM

GREENLEAF PHARMACY DORIC STREET

5 DORIC STREET, SCARBOROUGH
SCARBOROUGH
P: 9245 2080
WEEKDAYS: 7AM-7PM
SATURDAY: 7AM-7PM
SUNDAY: CLOSED

GREENLEAF PHARMACY SUBIACO

145 HAY STREET
SUBIACO
P: (08) 6370 2212
WEEKDAYS: 8AM-6PM
SATURDAY: CLOSED
SUNDAY: CLOSED

GREENLEAF PHARMACY DALKEITH

10/81 WARATAH AVENUE
DALKEITH
P: 9386 3625
WEEKDAYS: 8AM-6PM
SATURDAY: 8AM-5PM
SUNDAY: CLOSED

find us online at

WWW.GREENLEAFPHARMACIES.COM.AU

or on instagram & TIK TOK at



@ GREENLEAFPHARMACIES



ALL PRODUCTS DISPLAYED IN GIFT GUIDE SUBJECT TO STOCK AVAILABILITY - WHILE STOCKS LAST